



LASH³⁶⁰

LEVEL ALIGN SPACE HOLD

Tile Leveling System

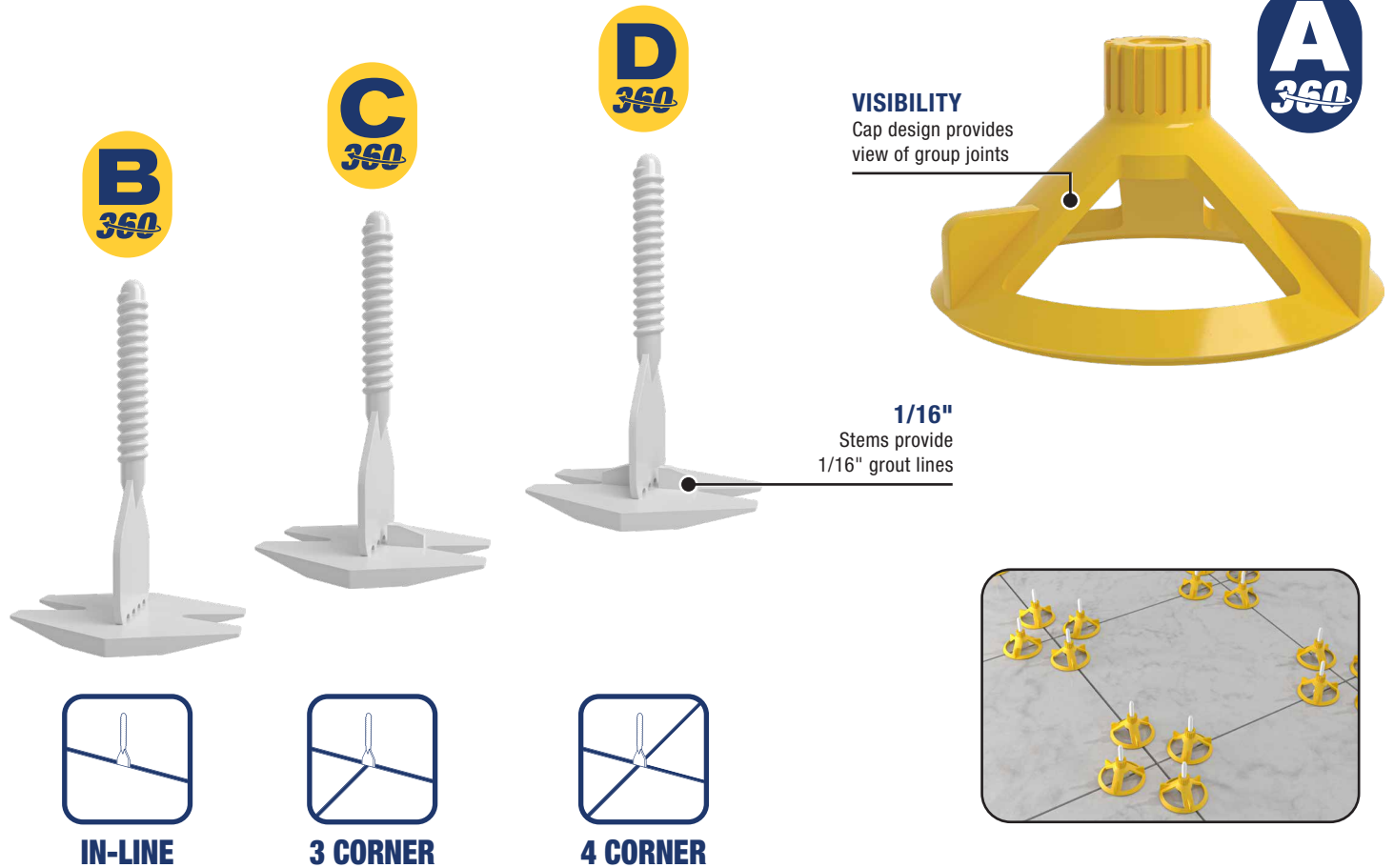
STEMS

Available in 3 formats to work with any tile layout

Two-part system eliminates uneven tile

For Large format tiles up to 3/4" in thick

CAPS











Install large format porcelain, ceramic and all natural stone tile up to 3/4" thick with the QEP[®] LASH 360[®] Tile Leveling System. This two-part system eliminates uneven tiles by holding tile in place to prevent lippage. The stems, part B, C, and D, grant even 1/16" grout lines and align neighboring tile of the same thickness for a level surface. Stems are available 3 styles: In-Line, 3 Corner and 4 Corner. The caps, part A, hold the tile at an even height for lippage-free results. For quick and easy removal, clips are designed to break off below the surface of the tile. Caps can be removed and reused. The QEP LASH 360 Tile Leveling System is used by professional and DIY installers alike to save time while providing a level and consistently spaced wall or floor.



Professional Tools for Professional Results

QEP.com

Easy to install and remove!

Item #	Type	Quantity
99734	 Caps	100/bag (8/case)
99834	 Caps	300/Box (4/case)
99835	 In-line - Clips 1/16"	300/Box (4/case)
99837	 In-line - Clips 1/16"	1000 Bulk Box (50 boxes/pallet)
99735	 3 Corner - Clips 1/16"	100/bag (8/case)
99836	 3 Corner - Clips 1/16"	300/Box (4/case)
99736	 3 Corner - Clips 1/16"	1000 Bulk Box (50 boxes/pallet)
99737	 4 Corner - Clips 1/16"	100/bag (8/case)

QEP LASH 360 Tile Leveling system is recommended when using at least a 1/4" x 3/8" x 1/4" or larger trowel to apply the setting material.

Estimated posts

		ESTIMATED POSTS REQUIRED PER 100 FT ²												
Tile Length (in inches)	12"	171												
	16	126	98											
	18	117	91	78										
	20	99	77	66	55									
	22	90	70	60	50	50								
	24	81	63	54	45	45	36							
	30	63	49	42	35	35	28	21						
	32	63	49	42	35	35	28	21	21					
	35	54	42	36	30	30	24	18	18	18	L"			
40	45	35	30	25	25	20	15	15	15	10	W"			
48	36	28	24	20	20	16	12	12	12	8	8			
		12	16	18	20	22	24	30	32	35	40	48"		
		Tile Width (in inches)												

Clip locations will vary by tile size

