



waxDRY Diamond Hole Saw Kit with Case 10485

12X
LONGER LIFE
than standard hole saws




DURABLE
Protective storage
case with foam



1/4"
6 mm



5/16"
8 mm



3/8"
10 mm

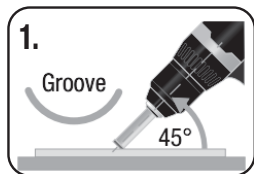


1/2"
12 mm

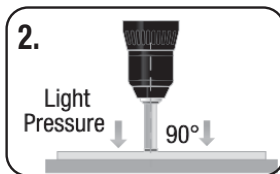


**DESIGNED FOR
EASY, FAST AND
ACCURATE CUTTING**

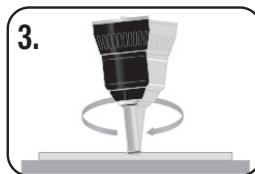
Directions for use:



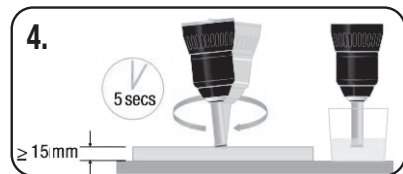
1. **Groove**
At full RPM, start drilling at a 45° angle. This will create a semi-circular groove in the tile surface.



2. **Light Pressure**
Once the groove has been established raise the drill to 90° and apply light pressure.



3. **Oscillation**
Gently oscillate the drill as the hole is being cut, continuing to apply light pressure only.



4. **Cooling**
When cutting thicker materials / deeper holes >15 mm (5/8") additional cooling is required. Dip the hole saw into water every 5 seconds during cutting.



The QEP® waxDRY Diamond Hole Saws for drills have up to a 12x longer life. They are designed for the easy, fast and accurate cutting of porcelain, ceramic and glass tiles. For all sizes, water can be used as additional cooling to prolong the life of the bit.