



Diamond Hole Saw

10571 / 10572



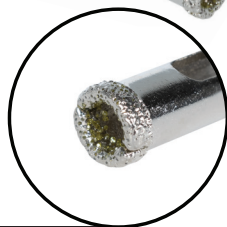
**LESS DUST,
FASTER CUTS**

DRILL GUIDE
Insert delivers easy
and accurate cuts

PRODUCT #	SIZE
10571	5/16"
10572	1/4"



**DESIGNED FOR CUTTING
PORCELAIN, CERAMIC
GRANITE, AND MARBLE**



DIAMOND CUTTING RIM
20% more diamond grit



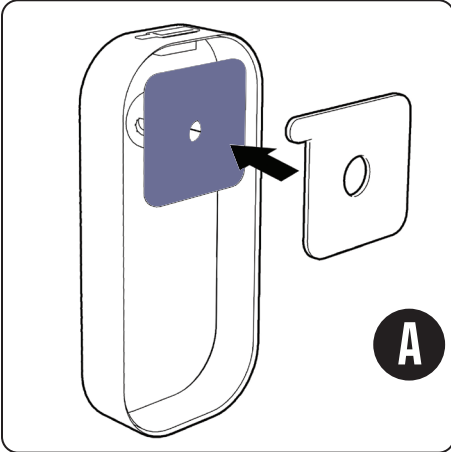
**WATER SYSTEM PREVENTS
DUST AND KEEPS SAW
FROM OVERHEATING**

ADHESIVE PADS
Includes 8 Adhesive Pads for
a secure, leak-resistant fit

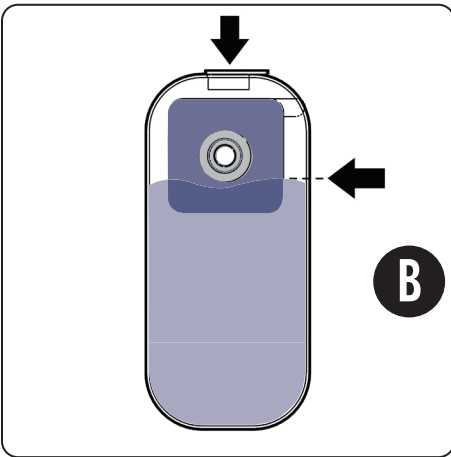


Use the QEP® Diamond Hole Saw Kits to drill holes when installing bathroom fixtures on various tile surfaces including porcelain, ceramic, marble and granite. In addition to the diamond drill bits, each kit contains 8 single use Adhesive Pads, a water cooling system and drill guide. This hole saw is designed to be used with the water system to keep it from overheating, and must be used with a cordless drill.

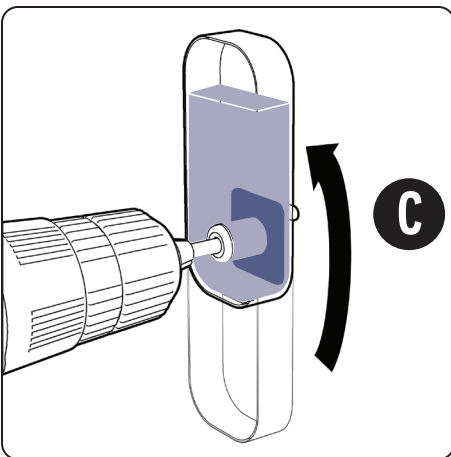
How To Use



1. Mark where the hole is to be drilled.
2. Be sure that the blue Drill Guide is flush to the Water Reservoir.
3. Peel paper from one side of Adhesive Pad and attach to the surface of the blue Drill Guide, centering the hole around the lip. Press firmly. **(A)**



4. Remove cap on Water Reservoir and fill with water to bottom edge of the Drill Guide. Reattach cap firmly. **(B)**
5. Remove remaining paper from Adhesive Pad. With Water Reservoir cap facing up, align the mark on the wall to the center of the Drill Guide. Press firmly to adhere.



6. Insert Drill Bit into Drill Guide. Rotate Water Reservoir 180 degrees and drill the hole. **(C)**