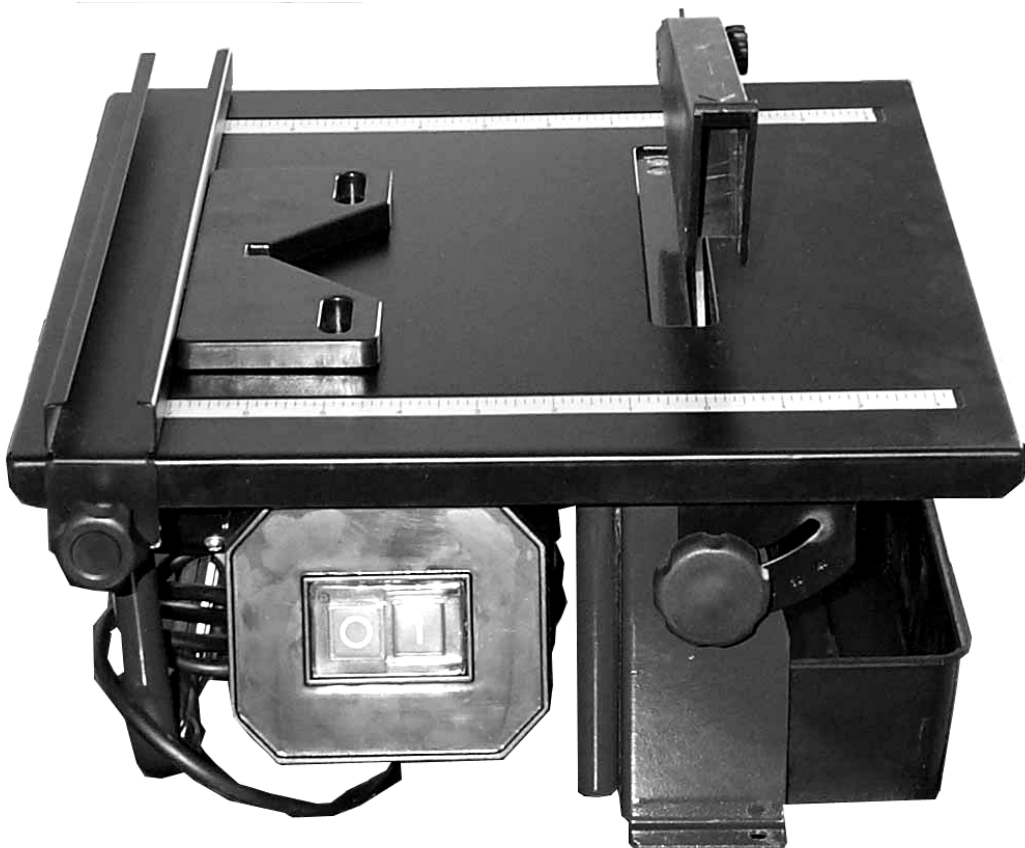


MASTER CUT PORTABLE TILE SAW INSTRUCTION MANUAL

MODEL NO.60707



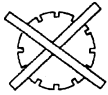
Carefully read the instruction manual before you use this machine,
and save this instruction manual for future reference.

TABLE OF CONTENTS

	PAGE
1 WARNING SYMBOLS	3
2 GENERAL SAFETY INSTRUCTIONS FOR POWER TOOLS	4-5
3 SPECIAL SAFETY INSTRUCTIONS FOR TILE CUTTER	5-6
4 TECHNICAL SPECIFICATIONS	6
Technical specifications	6
Electrical safety	6
5 UNPACKING	7
6 LOOSE PARTS LIST	7
7 FEATURES	8-9
8 ASSEMBLY AND OPERATION	10-11
Assembly of the tile cutter	10
Fitting the Tile Cutter on a Work Bench	10
Cut preparation	10
Rip cutting	10
45° Miter gauge	10
Bevel cutting	10-11
9 Blade installation and changes	12
10 EXPLODED VIEW	13
PARTS LIST	

WARNING SYMBOLS

WARNING! There are six warning symbols on the warning label which is affixed to the tile cutter. The purpose of warning symbols is to attract your attention to possible hazardous conditions. The progression of warning symbols is described below. Remember that safety messages by themselves do not eliminate danger and are not a substitute for proper accident prevention measures.



This tile cutting machine is designed for wet cutting only. Only use a Q.E.P. continuous Rim Diamond Blade!



Carefully read the instruction manual before operating this Tile Saw!



Keep your hands away from the running blade when operating the Tile Saw!



Wear eye protection at all times when operating the Tile Saw!



Wear hand protection at all times when operating the Tile Saw!



Wear ear protection at all times when operating the Tile Saw!

IMPORTANT INTENDED USE WARNINGS



Do not cut wood, metal or any other non-approved material



Continually check and fill the water tray – do not dry cut ceramic tiles



Use only a Continuous Rim Diamond Blade

GENERAL SAFETY INSTRUCTIONS FOR POWER TOOLS

IMPORTANT! When using electrical tools, the following safety instructions should be observed to prevent the risk of electric shock, personal injury and fire. Read and observe these instructions carefully before using the Tile Saw.

1. Keep work area clean

Cluttered areas and benches invite injuries.

2. Consider work area environment

Do not expose power tools to rain. Do not use power tools in damp or wet locations. Keep work area well lit. Do not use power tools near flammable liquids or gases.

3. Guard against electric shock

Prevent body contact with grounded surfaces (e.g. pipes, radiators, ranges, refrigerators etc.)

4. Keep children away

Do not let visitors contact tool or extension cord. All visitors should be kept away from work area.

5. Store idle tools

When not in use, tools should be stored in a dry, high or locked-up place, out of the reach of children.

6. Do not force tool

It will do a better job and operate more safely at the rate for which it was intended.

7. Use right tool

Do not force small tools or attachments to do the job of a heavy duty tool. Do not use tools for other than their intended purpose; for example do not use a circular saw for cutting tree limbs or logs.

8. Dress properly

Do not wear loose clothing or jewelry. They can be caught in moving parts. Rubber gloves and non-skid footwear are recommended when working outdoors. Wear protection hair covering to contain long hair.

9. Use safety glasses

Also use a dust mask during pulverulent operations and wear ear protection. If the noise level exceeds 85 dB (A), ear protection is obligatory. Indicated noise levels may be exceeded dependent on the working environment and the material to be treated.

10. Use dust extraction

If dust extraction and collection devices are present on the tool, make sure that they will be used properly.

11. Do not abuse cord

Never carry tool by cord or yank it to disconnect it from wall outlet. Keep cord from heat, oil and sharp edges.

12. Secure work

Use clamps or a vise to hold the work piece. It is safer and it frees both hands to operate the tool.

13. Do not overreach

Keep proper footing and balance at all times.

14. Maintain tools with care

Keep tools sharp and clean for better and safer performance. Follow instructions for lubricating and changing accessories. Inspect tools cords periodically and, if damaged, have them repaired by an authorized service facility.

Inspect extension cords periodically and replace if damaged. Keep handles dry, clean and free from oil and grease.

15. Disconnect tools

When not in use, before servicing, and when changing accessories such as blades, bits and cutters.

16. Remove adjusting keys and wrenches

Form the habit of checking to see that keys and adjusting wrenches are removed from the tool before switching it on.

17. Avoid unintentional starting

Do not carry plugged-in tools with finger on switch. Be sure that the tool is switched off before plugging in.

18. Outdoor use extension cords

When tools are used outdoors, use only extension cords intended for use outdoors and so marked.

19. Stay alert

Watch what you are doing. Use common sense. Do not operate tools when you are tired.

20. Check damaged parts

Before further use of the tool, a guard or other part that is damaged should be carefully checked to determine that it will operate properly and perform its intended function. Check for alignment of moving

parts, binding of moving parts, breakage of parts, mounting, and any other conditions that may affect its operation. A guard or other part that is damaged should be properly repaired or replaced by an authorized service center unless otherwise indicated elsewhere in the instruction manual. Do not use tool if switch does not turn it on and off.

21. Warning

The use of any other accessory or attachment other than recommended in the instruction manual may present a risk of personal injury.

22. Have your tool replaced by an expert

This electric appliance is built in accordance with the relevant safety rules. Repair of electric appliances must only be carried out by experts otherwise it may cause considerable danger for user.

Store these instructions for future reference

SPECIAL SAFETY INSTRUCTIONS FOR TILE CUTTER

WARNING! This tile cutter is only designed for wet cutting, and only a Q.E.P continuous Rim Diamond Blade should be used.

1. Wet Hands

Do not touch electrical connections with wet hands.

2. Plug in

All plug and receptacles must be off the ground and in a dry location.

3. Blade cooling

Ensure that the blade remains lubricated with water during all cutting operations, continually check and fill the water reservoir if required.

4. Dry cutting

Never dry cut with blades designed for wet

cutting.

5. Dust mask

Always wear a dust mask when cutting tile.

6. Diamond blades

Do not feed the tile into the blade faster than the blade can cut.

7. Blade selection

Match the correct diamond blade to the material being cut.

8. Blade mounting

Before mounting the blade, inspect the arbor, arbor nut, and flanges for damage,

wear, or looseness. Replace any damaged or worn parts. ALWAYS DISCONNECT FROM POWER BEFORE CHANGING OR ADJUSTING THE BLADE.

9. Blade direction

Check that the directional arrow on the saw blade and the motor shaft are rotating in the same direction.

10. Blade arbor

Ensure the blade arbor hole size matches the arbor shaft size on the tile cutter.

11. Blade guard

Do not operate the tile cutter without blade guard installed and properly adjusted.

12. Blade speed

Do not exceed the safe operating speed of the blade.

13. Side grinding

Do not use the blade for grinding purposes, e.g. for grinding the edge of a tile after cutting it. Do not carry out radius or curve cuts.

This Tile Saw is recommended and warranted for domestic use only

Run down time

The run down time of the blade is 40 seconds after switching off the power. Wait until the blade stops completely, and then pull out the plug from the mains socket. Only after this are you allowed to touch rotating parts if necessary.

Prevent any contact with rotational tool during the operation

TECHNICAL SPECIFICATIONS

Technical specifications

Model	60707
Voltage	230V~240V
Frequency	50Hz
Power input	350W (S ₁) 600W (S ₂ :20min)
No load speed	3,000min ⁻¹
Saw Blade dimensions (Continuous rim diamond blade only)	Φ180XΦ22.2mm
Insulation class	Class B
Protection degree	IP 54
Max. cutting depth (90°)	35mm
(45°)	22mm
Work table dimensions	330X360mm
Nominal mass	10kgs
Max. operating mass	12kgs
L _{pa} (sound pressure level)	66.3 dB(A)
L _{wa} (sound power level)	79.3dB(A)

Remark: S1 means continuous operation
S2 30min means short-time operation for 20min

Electrical Safety

WARNING! Always check that the power supply corresponds to the voltage on the rating plate.

Replacing cables or plugs

Immediately throw away old cables or plugs when they have been replaced by new ones. It is dangerous to insert the plug of a loose cable in the wall outlet.

Using extension cables

1. Always use a three (3) core extension lead having a conductor size of at least 1.0mm² and a length not exceeding 20 metres
2. Only connect your machine and/or extension cable to an earthed power point. If in doubt about the earthing of the power point, consult an electrician.
3. Even considering variations of the power

supply ($\pm 10\%$ AC 230V), the rotational speed of the spindle will never exceed the rated no-load speed.

Grounding

In the event of an electrical short circuit, grounding reduces the risk of electric shock by providing a path of least resistance to disperse electric current. This machine is equipped with a power cord having an equipment-grounding prong

1. Reduce the risk of electrocution by keeping all connections dry and off the

ground. Do not touch plugs with wet hands. Failure to follow these warning could result in serious injuries.

2. This machine must have a ground prong in the plug to help ensure that it is grounded. Do not remove ground prong from plug to fit into a two-pronged outlet! If the plug will not fit the outlet, have the proper outlet installed by a qualified electrician.

UNPACKING

WARNING! To prevent accidental starting that could cause possible serious personal injury, assemble all parts to your tile cutter before connecting it to power supply. Tile cutter should never be connected to power supply when you are assembling parts, making adjustments, installing or removing blades, or when not in use.

- Carefully remove all parts from the carton and place the tile cutter on a level work surface. Separate and check against the list of loose parts.

WARNING! If any parts are missing, do not operate this tool until the missing parts are replaced. Failure to do so could result in possible serious you new tile cutter.

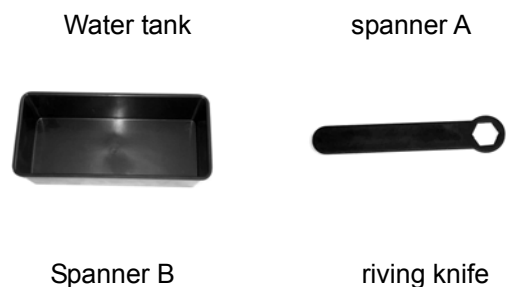
- Do not discard the packing materials until you have carefully inspected the tile cutter, identified all parts, and satisfactorily operated you new tile cutter.

Note: If any parts are damaged or missing, do not attempt to plug in the power cord and turn the switch on until the damaged or missing parts are obtained and are installed correctly.

LOOSE PARTS LIST

Check all loose parts from the box with the list below. Assemble according to the instruction on the following pages.

	Instruction manual (not shown).....	1
Water tank.....		1
Spanner A.....		1
Spanner B.....		1
Riving knife.....		1
Blade guard.....		1
Parallel guide.....		1
180mm Continuous rim diamond blade.....		1
Miter gauge.....		1





Blade guard



parallel guide



180mm Continuous rim diamond blade



Miter gauge

FEATURES

Before attempting to use, familiarize yourself with all the operating features and safety requirements of your tile cutter.

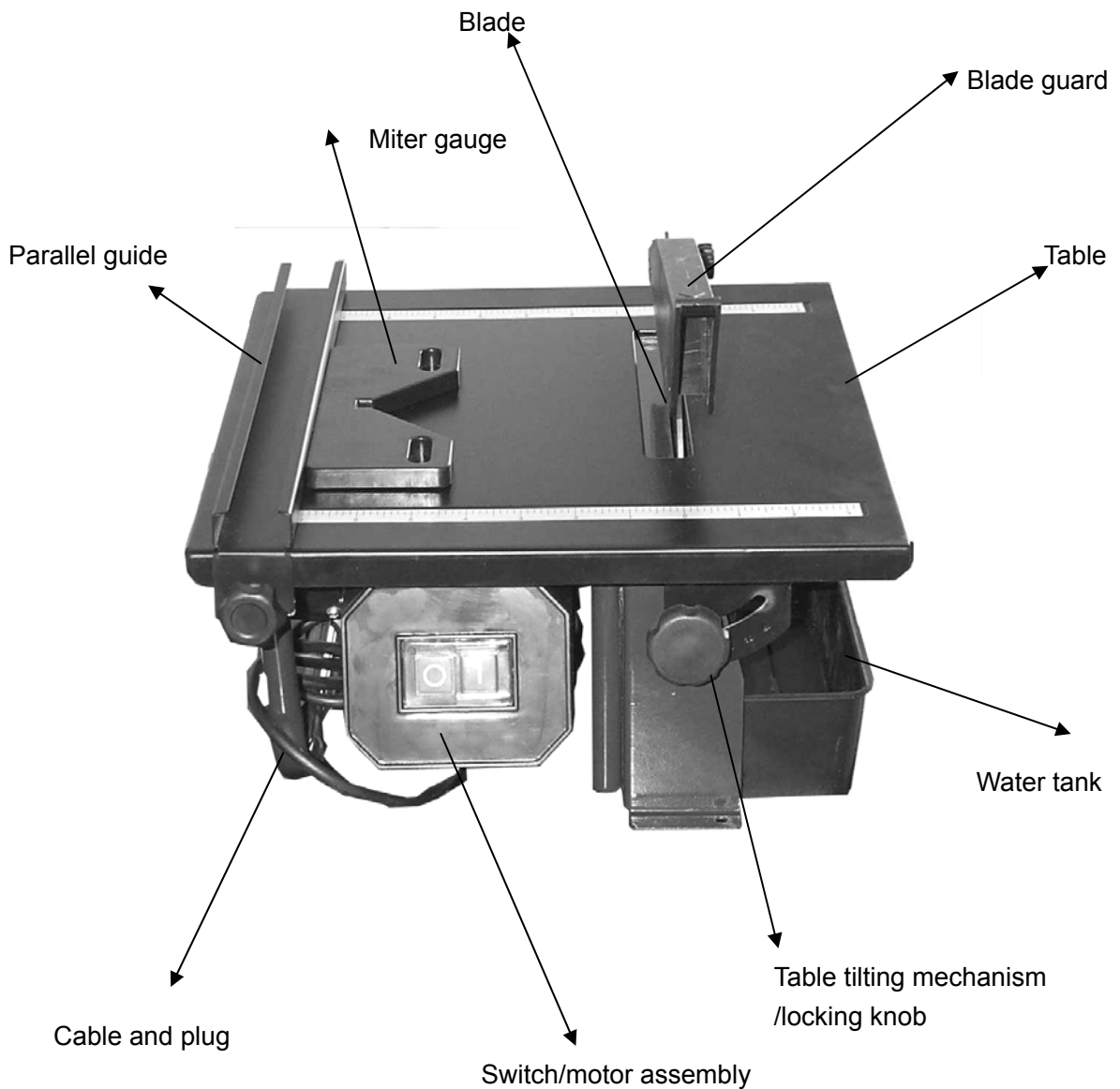


Figure 1. Front view of tile cutter

Blade

This machine comes with a standard Φ 180mm blade w/bore 22.2mm diamond blade.

WARNING! Only use the continuous rim diamond blade.

Blade guard

Protects the operator from coming in contact with the blade.

Miter gauge

Diagonal cuts can be made on rectangular tiles using the supplied miter gauge.

Parallel guide

Rip cuts can be made on rectangular tiles using the supplied parallel guide.

Water tank

Contains water to cooling the blade when any operation of this machine.

Table

This machine has a square 330X360mm steel table with tilt control for bevel cutting.

Switch/motor assembly

This machine has a magnetic switch for safer operation.

WARNING! If the switch is worn, do not attempt to operate this machine, and have repaired by a qualified electrician.

INTENDED USE

WARNING! The tile cutter is designed to perform cutting jobs on small and medium tiles (floor and wall tiles made of ceramic and similar material) which suit the machine size.

WARNING! Thickness of tiles is not more than 35mm

It is intended in particular for use by DIY enthusiasts and craftsman. The cutting of wood and metal is prohibited. **The machine is to be used solely for its intended purpose.**

Any use other than its intended use is a case of misuse. The user/operator and not the manufacturer shall be liable for any damage or injury resulting from case of misuse. Only those cutting wheels suitable for the machine are to be used. The use of saw blades is prohibited. For the machine to be used as intended it is also imperative to observe the safety instructions, the assembly instructions and the operating instructions set out in this manual. All persons entrusted with operating and servicing the machine must be acquainted with the manual and must be informed about the machine's potential hazards. It is also imperative to pay exact attention to the accident prevention regulations in force in your country and to observe the general rules of occupational health and safety. The manufacturer can accept no liability whatsoever for damages resulting from any modifications to the machine. Even when the machine is used as intended, certain residual risk factors cannot be ruled out completely. The following hazards may arise in connection with the machine's design and construction:

- Touching of the diamond cutting wheel in the uncovered zone.
- Reaching into the area of the diamond cutting wheel when it is running.
- Catapulting of a faulty diamond tip off the cutting wheel.
- Kicking of work pieces and work piece parts during incorrect operation.
- Damage to hearing if ear muffs are not worn.

ASSEMBLY AND OPERATION

Assembly of the tile cutter on the workbench

Figure 2 shows the dimensions of mounting holes which have been pre-drilled on the machine frame.

1. Drill three holes in the workbench as the same dimensions as Fig. 2.
2. Fasten the machine with bolt onto the workbench.

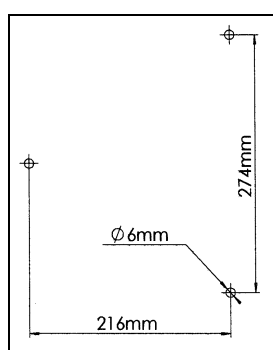


Figure 2: dimensions of mounting holes

Cut preparation

WARNING! To avoid serious personal injury, read and become familiar with the instruction manual before making any cuts with this tile cutting machine.

WARNING! Damage to your eyes, lungs, and ears could result from failure to wear safety glasses, a dust mask, and hearing protection while cutting with the machine.

Rip cutting

1. Using a marking pencil, mark the cut line on a piece of tile.
2. Unlock the parallel (Figure 3) guide and slide it to the edge of the table.

WARNING! Only use the machine after it has been assembled completely and it has been screwed onto the workbench.

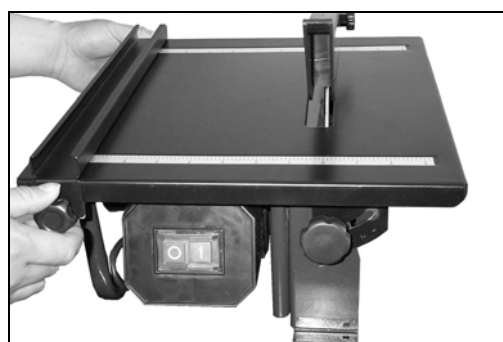


Figure 3: Parallel guide locking knob

3. Line up the cut line on the tile with the diamond blade.
4. Adjust the parallel guide against the edge of the tile and lock the parallel guide into position.
5. Turn the machine ON and allow it to reach full speed. Be sure the blade runs smoothly. The blade should also be wet from the water tank below the machine.
6. Keeping your fingers out of the cutting path, slowly slide the tile into the moving blade. **Note**-DO NOT feed the tile into the blade too fast.

45° Miter cutting

Diagonal cuts can be made on rectangular tiles using the supplied miter gauge. Figure 4 shows a typical set up for cutting the corner off a square tile.



Figure 4: Diagonal cutting with the miter gauge.

Bevel cutting

The work table can be tilted up to 45° to accommodate bevel cutting. Loosen the knob on the front of the tile cutter as shown in Figure 5. Use the scale on the front of the tile cutter to set the desired table tilt angle. Retighten the knob to secure the table.

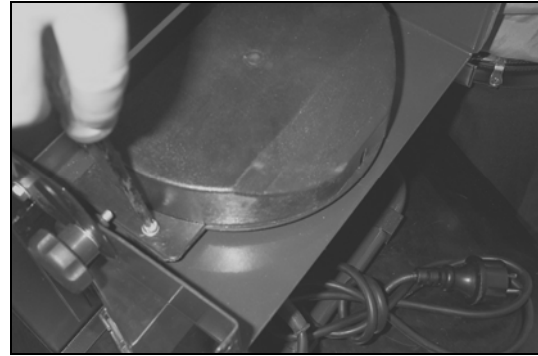


Figure 5: Tilting the table for bevel cutting

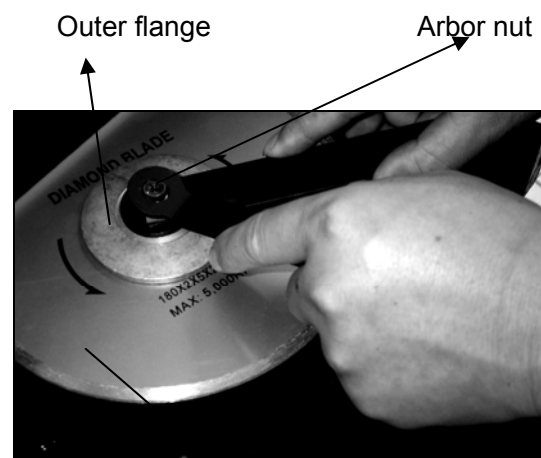
Blade installation and changes

WARNING! This tile cutter is only designed for wet cutting, and only the continuous rim diamond blade can be used.

1. **Unplug the machine from the power source!**
2. Remove the water tank from underneath the machine.
3. Remove the lower blade guard by removing the screws on each side of the lower blade guard (Figure 6).

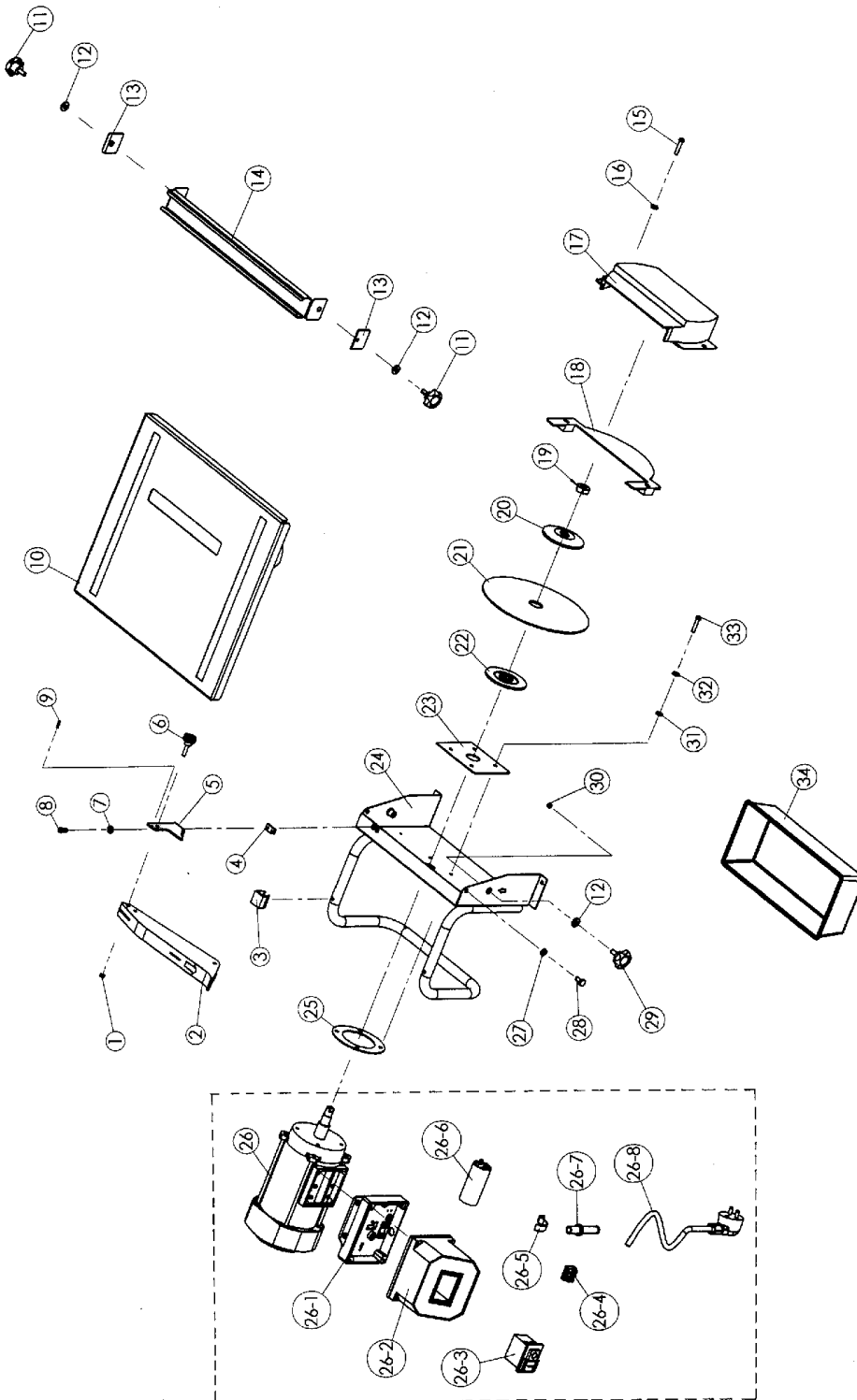


4. Use spanner A and spanner B to loosen and remove the arbor nut from the motor spindle as shown in Figure 7.



5. Slide the outer flange (Figure 7) and the diamond blade off the end of the motor spindle.
6. Slide the new diamond blade and the outer flange over the end of the motor spindle. Note-Make sure the directional arrow printed on the diamond blade is pointing in a counter-clockwise direction when viewing the machine facing the arbor nut.
7. Thread and tighten the arbor nut onto the motor spindle to secure the diamond blade.
8. Re-install the lower blade guard.

EXPLODED VIEW



PARTS LIST

Part No.	Description	Q'ty	Part No.	Description	Q'ty
1	Nut (M5)	1	26-5	Fixing Plate	1
2	Blade Guard	1	26-6	Capacitor	1
3	Plastic pad	4	26-7	Rubber Tube	1
4	Nut	1	26-8	VDE Cable & Plug	1
5	Riving Knife	1	27	Washer	2
6	Bolt	1	28	Screw	2
7	Washer	2	29	Knob	2
8	Screw	2	30	Nut	2
9	Pin	1	31	Nut	4
10	Table	1	32	Washer	4
11	Knob	2	33	Screw	4
12	Washer	4	34	Water Tank	1
13	Clamping Plate	2			
14	Parallel Guide	1			
15	Screw	2			
16	Washer	2			
17	Lower Guard	1			
18	Guard Plate	1			
19	Nut	1			
20	Outer Flange	1			
21	Blade	1			
22	Inner Flange	1			
23	Steel Plate	1			
24	Machine Frame	1			
25	Seal Ring	4			
26	Motor	1			
26-1	Low Switch Box	1			
26-2	Upper Switch Box	1			

26-3	Switch	1			
26-4	Terminal Block	1			