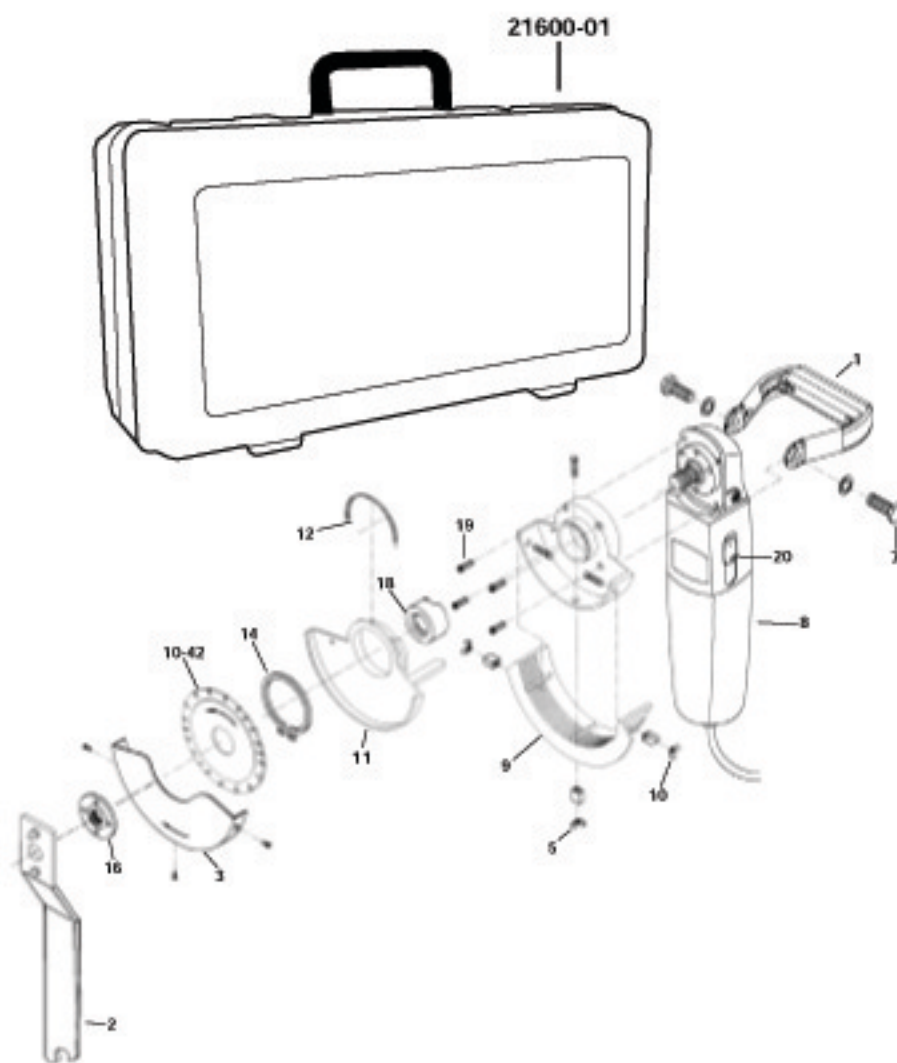




No. 21600 "The Jamby" Jamb Saw

ORDER NO.	DESCRIPTION
10-40-01	Handle
10-40-02	Spanner Wrench
10-40-03	Blade Safety Cover
10-40-05	Screws/Wing Nuts (pack of 3)
10-40-07	Handle Bolt and Lock Washer
10-40-08	Mounting Body
10-40-09	Adjustment Skirt
10-40-10	Screw, Lock Washer, Wingnut (bulk)
10-40-11	Safety Guard
10-40-12	Return Spring
10-40-14	Snap Ring
10-40-16	Blade Retainer Nut
10-40-18	Spacer Blocks
10-40-19	Mounting Screws (4)
10-40-20	Switch
21600-01	Carry Case
10-42	4-1/2" Carbide Tip Saw Blade





ORDER FORM

ORDER NO.	DESCRIPTION	QUANTITY	PRICE	TOTAL

Subtotal	
Shipping & Handling	* 7.95
Total Amount	

To Order:

Fax to 561-241-2830

or

Mail to Q.E.P. Co., Inc.
1001 Broken Sound, NW Suite A
Boca Raton, FL 33487

* Shipping & Handling may vary depending on weight and dimensions of product.

Name: _____

Address: _____

City: _____ State: _____ Zip: _____

Phone #: _____ Daytime Phone #: _____

Payment: CHECK VISA MASTER CARD

Credit Card #:

Expires: / /

Billing Credit Card Zip Code: -

Signature: _____ Date: _____