



Tile Leveling System Wide Style

Levels, aligns, spaces and holds large format tiles for an even installation

CLIPS

2-part system (sold separately)

For Tiles up to 1/2" Thick

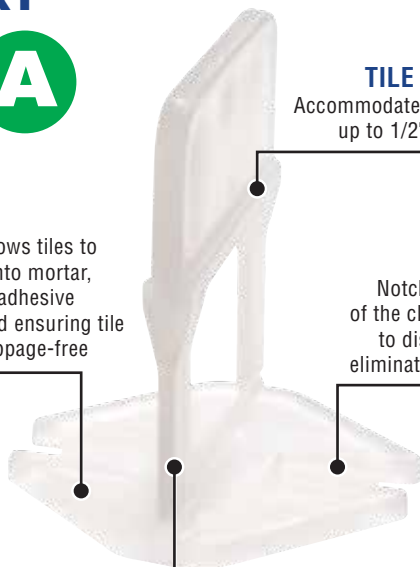
WEDGES

PART



LEVEL

Flat base allows tiles to be pushed into mortar, maximizing adhesive coverage and ensuring tile surface is lippage-free



TILE SIZE

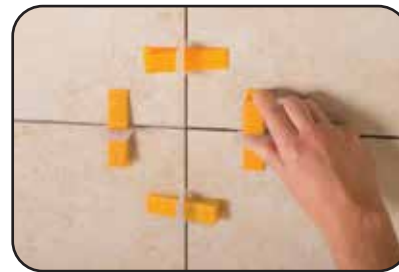
Accommodates tiles up to 1/2" thick

DESIGN

Notches on each side of the clip allows mortar to dispense evenly to eliminate potential voids

2 WIDTHS

Spaces tiles 1/16" or 1/8" and can accommodate standard width spacers up to 1/4"



PART

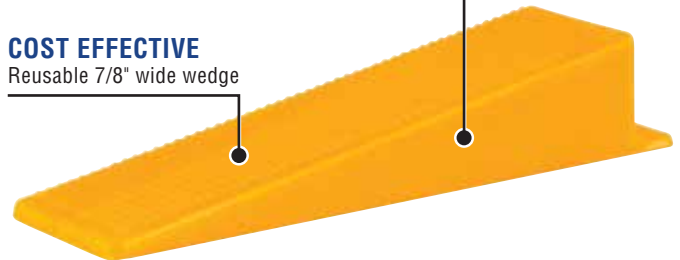


HOLD

Wide wedge design holds tiles securely while mortar dries

COST EFFECTIVE

Reusable 7/8" wide wedge



The Tile Leveling System was developed out of a need to diminish costly mistakes due to unlevelled tiles causing lippage in high-end installations. It is the perfect system to use with tile plank and large-format rectified porcelain, marble and stone and the flat base design is ideal for wall tile installations. This time saving system adjusts the height of the tiles and evenly holds their edges throughout the curing process. It is the most cost effective installation method on the market to eliminate lippage.

The Tile Leveling System comes in 2 widths, 1/16" and 1/8", and provides narrow grout lines for tiles up to 1/2" thick. For grout joints up to 1/4", traditional spacers can be used.

The Brand that Stands for Excellence.

www.QEP.com

U.S. Headquarters
866 435 8665

Canada
800 840 9422

Europe/Middle East
0031 24 6485348

Australia
011 61 3 9797 1888

New Zealand
64 9 415 9700

Easy to install and remove!



Slide two clips under the tile and into the mortar approximately 2" from each end of the tile. Place the second tile.



Slide the reusable wedges into the clips to level, align, space and hold the tiles.



Once mortar has set, simply tap the clips with a non-marring rubber mallet to snap off at the specially designated break-points. Save wedges for future use.

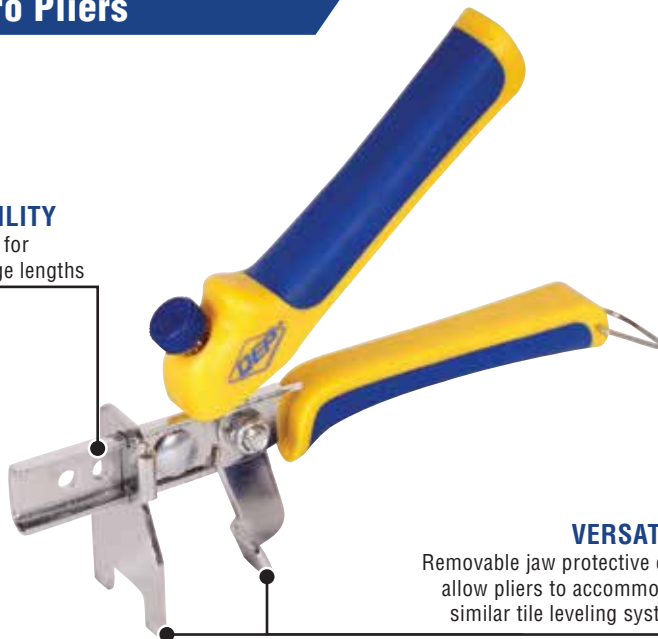
The Wall & Floor Tile Leveling System should only be used with a minimum 1/4" x 1/4" x 1/4" square trowel notch to apply the setting material. Back buttering your tile is always recommended.

Item #	Type	Quantity
99710Q	A 1/16"	100/bag (8/case)
99756Q	A 1/16"	2000 Bulk Box (28 boxes/pallet)
99718Q	A 1/8"	100/bag (8/case)
99719Q	A 1/8"	800 Bulk Box (60 boxes/pallet)
99715Q	B Wedges	100/bag (8/case)
99757Q	Pro Pliers	(6/case)

100 A + 100 B	
Tile Size	Coverage
16" x 16"	41 ft ²
18" x 18"	56 ft ²
24" x 24"	68 ft ²

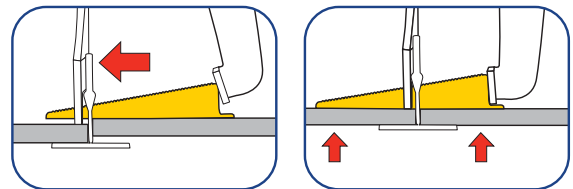
99757Q Pro Pliers

ADJUSTABILITY
Easily adjusts for different wedge lengths



VERSATILE

Removable jaw protective caps allow pliers to accommodate similar tile leveling systems



- Ensure wedges are set properly in the leveling clips every time (One to Two Clicks)
- For use with the Original Tile Leveling System, Flat Clips and all similar Tile Leveling Systems

E2119-11342

The Brand that Stands for Excellence.

www.QEP.com

U.S. Headquarters
866 435 8665

Canada
800 840 9422

Europe/Middle East
0031 24 6485348

Australia
011 61 3 9797 1888

New Zealand
64 9 415 9700