



8" Vacuum Pump Suction Cup with Gauge

75022

PLUNGER
Pump to engage suction

ERGONOMIC
Non-slip grip

MAINTANANCE
Parts included

WIDE BASE
For better balance

DURABLE
8" durable rubber suction pad

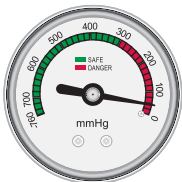
GAUGE
Red indicates insufficient pressure

CONVENIENT
Protective carry case

RED INDICATES INSUFFICIENT PRESSURE

285 POUNDS HOLDING POWER*

MAKES HEAVY LIFTING EASY



The QEP® 8" Vacuum Pump with Suction Cup with Gauge makes heavy lifting easy. This hand held portable suction cup has a holding power of 285 lbs. It can be used to lift large tiles, stone, glass and all types of non-porous building material. To use, pump plunger until red line disappears and suction is engaged. During use, red line should not be not visible. Gauge safety feature indicates insufficient pressure. Release valve is located on opposite end of plunger. Store with protector cover (included) in durable carrying case.

*When used on a clean, smooth, non-porous surface