



8" Vacuum Pump Suction Cup with Gauge

75022

MAINTANANCE
Parts included

REINFORCED ERGONOMIC
Non-slip grip

RED LINE INDICATOR
Shows pressure is engaged

PLUNGER
Pump to engage suction

CONTROL
Release valve lever

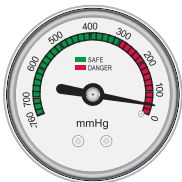
DURABLE, ANTI-SLIP
8" durable rubber suction pad

SAFETY SUCTION GAUGE
Red indicates insufficient pressure

WIDE BASE
For better balance

CONVENIENT
Protective carry case

MAKES HEAVY LIFTING EASY



RED INDICATES INSUFFICIENT PRESSURE



HOLDING POWER*

The QEP® 8" Vacuum Pump with Suction Cup with Gauge makes heavy lifting easy. This hand held portable suction cup has a holding power of 285 lbs. It can be used to lift large tiles, stone, glass and all types of non-porous building material. To use, pump plunger until red line disappears and suction is engaged. During use, red line should not be not visible. Gauge safety feature indicates insufficient pressure. Release valve is located on opposite end of plunger. Store with protector cover (included) in durable carrying case.

*When used on a clean, smooth, non-porous surface