

Tile Leveling System

CLIPS

PART

A

2-part system (sold separately)

For Tiles up to 1/2" Thick

WEDGES

PART

B

A

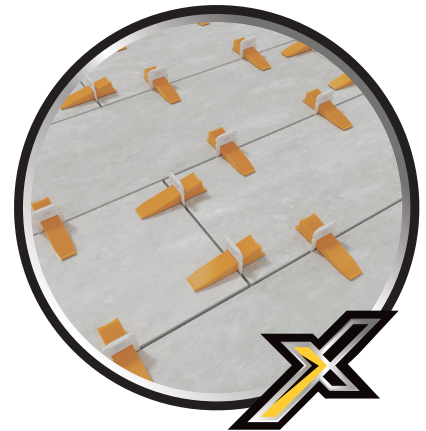


LEVEL
Flat base notched for maximum adhesive coverage

4 CLIP SIZES
Available in four popular grout widths
1/32", 1/16",
1/8" and 3/16"

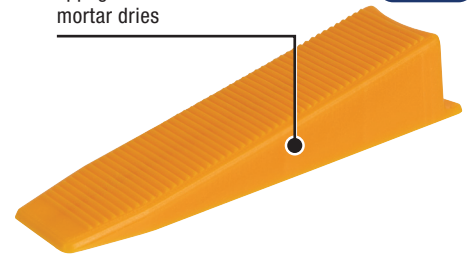
DESIGN
Notches on each side of the clip allow clear break well below tile surface

TILE SIZE
Opening accommodates tiles up to 1/2" thick



HOLD
Ensures the surface is lippage-free while the mortar dries

B



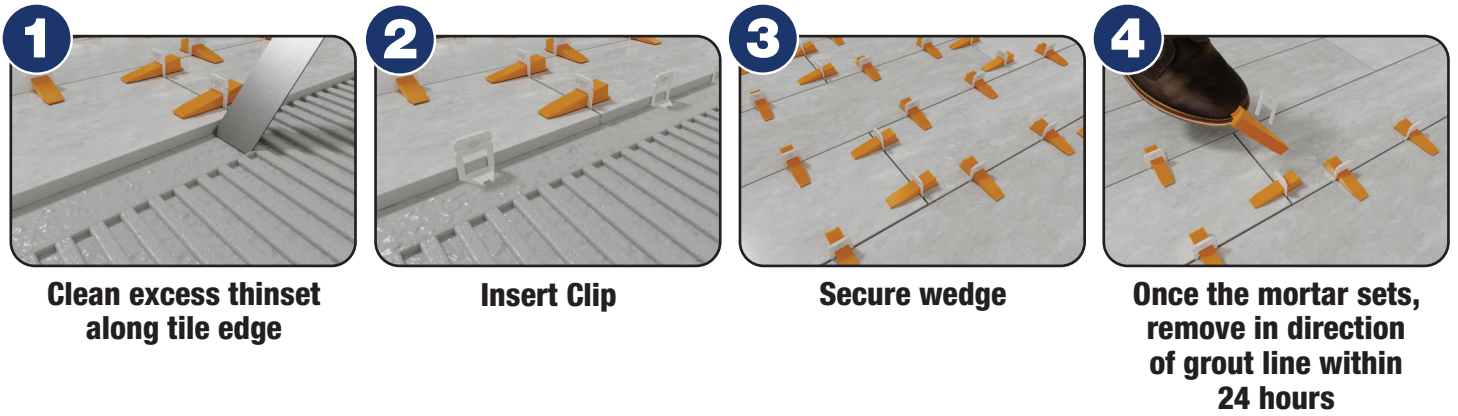
SCAN HERE FOR
PRODUCT INFO



The Tile Leveling System was developed out of a need to diminish costly mistakes due to unlevelled tiles causing lippage in high-end installations. It is the perfect system to use with tile plank and large-format rectified porcelain, marble and stone and the flat base design is ideal for wall tile installations. This time saving system adjusts the height of the tiles and evenly holds their edges throughout the curing process. It is the most cost effective installation method on the market to eliminate lippage.

The Tile Leveling System comes in 4 clip sizes with 1/32", 1/16", 1/8" and 3/16" and provides narrow grout lines for tiles up to 1/2" thick. Wedges are 7/8" wide and can be collected and reused.

Easy to install and remove!



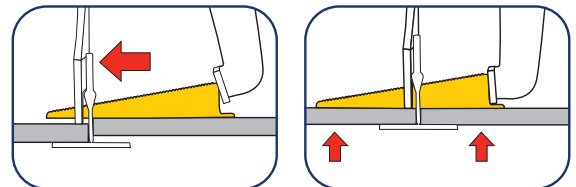
The Wall & Floor Tile Leveling System should be used with a minimum 1/2" x 1/2" x 1/2" square trowel notch to apply the setting material. Back buttering your tile is always recommended.

Type	Item #	Quantity	Type	Item #	Quantity
A 1/32"	99751	100/Bag (8/case)	A 1/8"	99769	100/Bag (8/case)
	99771	500/Box (8/case)		99869	300/Box (4/case)
	99971	300/Box (4/case)		99773	500/Box (8/case)
	99871	1000/Box		99873	1000/Box
	99776	2000/Box		99778	2000/Box
A 1/16"	99761	100/Bag (8/case)	A 3/16"	99774	500/Box (8/case)
	99861	300/Box (4/case)		99779	2000/Box
	99772	500/Box (8/case)	B Wedges	99762	100/Bag (8/case)
	99872	1000/Box		99862	300/Box (4/case)
	99777	2000/Box		99775	500/Box (8/case)
			99780	2000/Box	

99784 Pro Pliers

PERFORMANCE

Stop pin allows for proper pressure



- Ensure wedges are set properly in the leveling clips every time (One to Two Clicks)
- Can also be used with the Original LASH® Tile Leveling System and all similar Tile Leveling Systems